

Appartement Saint-Martin-de-Belleville Centre - Saint-Martin-de-Belleville LA GRANGE



10 045 €

Informations

City : Saint-Martin-de-Belleville

Region : Auvergne-Rhône-Alpes

Reference : LAGRANGE

Mandat : EN-LAGRANGE

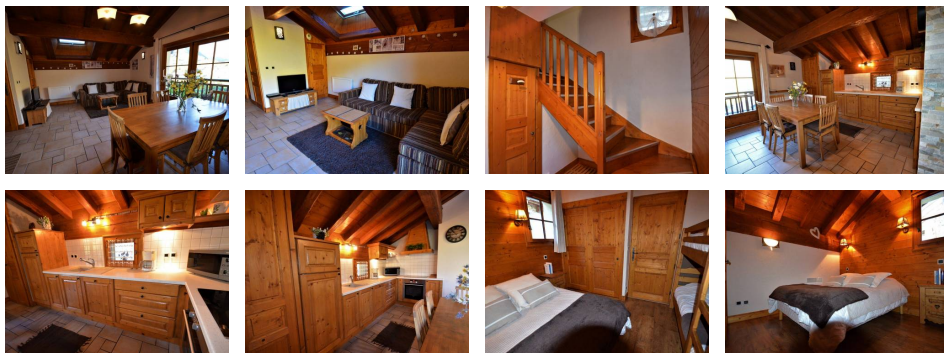
Type : Appartement

Area : 65 m²

Rooms : 3

Diagnostic énergétique

Rating in progress or not applicable.



ST MARTIN DE BELLEVILLE - Villarencel Area

Chalet La Grange (the barn), 3 rooms duplex apartment for 4/5 persons 65sqm, on the ground floor, small South facing terrace (9sqm) with view on Les Encombres Valley. 300 meters from the ski lift at the center of the village, possibility to use a free shuttle (100 meters approx. during winter season only)

INCLUDED SERVICES (winter season / December to April): supply of bed linen, end-of-stay cleaning, towels, bath mats, tea towels, cleaning kit (sponge, washing-up liquid, multi-purpose cleaner and dishwasher tablets). Services on request outside this period.

OTHER SERVICES AVAILABLE ON RESERVATION: additional linen (bed, toilet, kitchen, etc.), cleaning during your stay, extra hotel services and other services (subject to availability).

Ground floor:

Bedroom 2: 2 single beds (2x90cm)